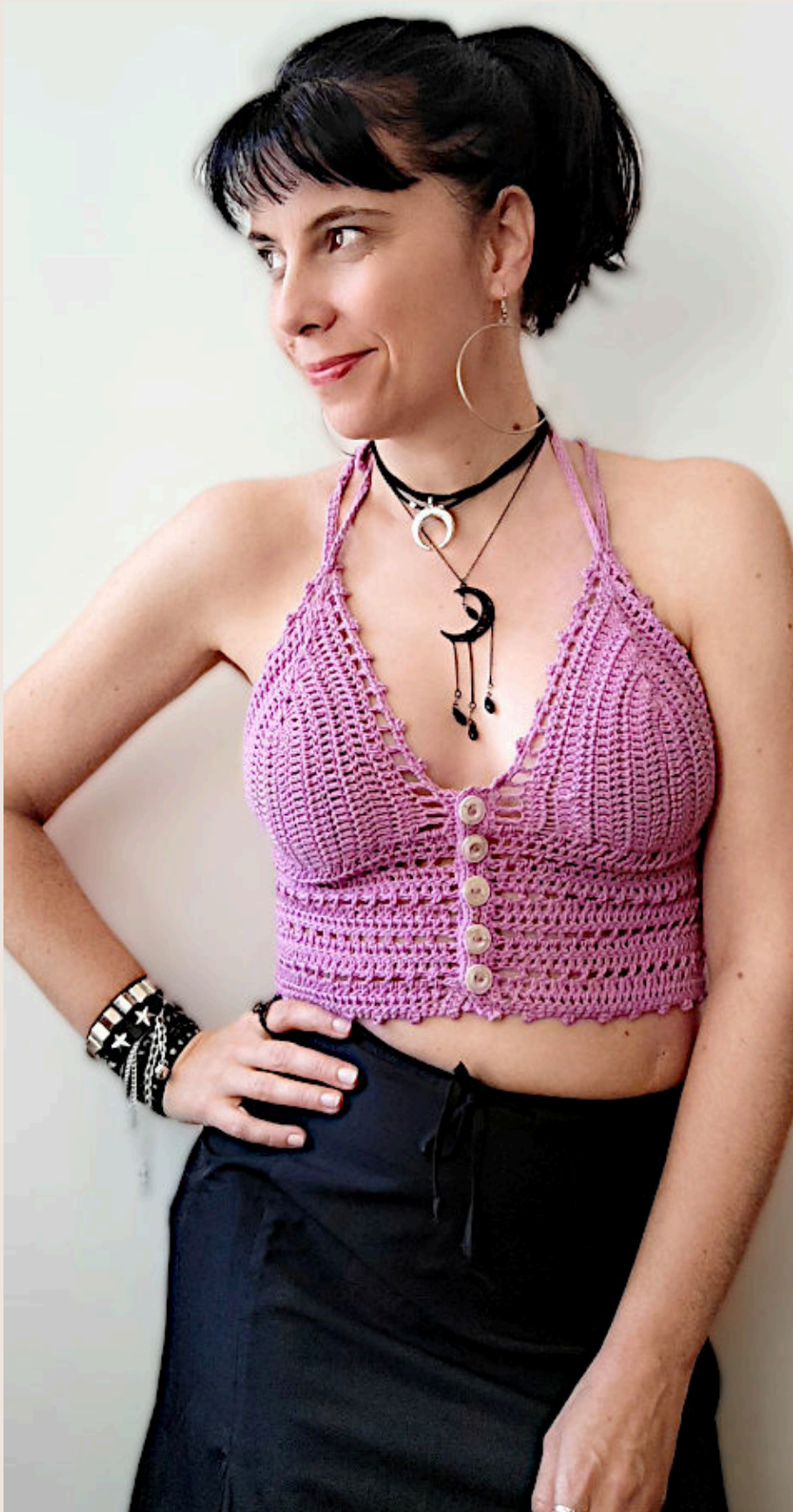


.....))) ● (((.....

Moonchild Lilac Crop-Top

By Jelena Mitić



ragdoll@krpenalutkica.com
krpenalutkica.com



Moonchild
Crochet & Knit pattern collection

Contents

Moonchild Set – Intro 3

Note to the maker 4

Moonchild Halter Top 5

Material 7

Size Guide 8

Instructions 11

A Word from the Designer 19



Introduction to the Moonchild Set

The Moonchild Set captures the carefree spirit of summer with a touch of timeless elegance. Built around a harmonious stitch pattern that blends crochet and knit textures, the collection offers versatile pieces you can wear together or mix into your everyday wardrobe.

At its heart are two skirts — a playful mini and a sophisticated pencil-length version — paired with 2 figure-flattering Moonchild Halter Tops. Accessories complete the look: a lacy summer hat that shifts effortlessly from chic brimmed shape to a playful cowboy silhouette, a bracelet designed to adorn either wrist or upper arm, and a delicate choker necklace for the perfect finishing touch.

Whether worn as a complete ensemble or styled separately, the Moonchild Set is designed to celebrate handmade craftsmanship while embracing a modern bohemian soul.



Note to the maker

Thank you for choosing to create the Moonchild Lilac Crop-Top. I hope it brings you the same sense of calm and freedom it brought me as I made it.

Whether you're a seasoned crafter or just beginning to explore the balance between crochet and knit, take your time and enjoy each step. Let the stitches lead you. Let the yarn decide. And if you find yourself adjusting the length, changing the yarn, or adding your own touch—know that you're doing it exactly right.

Here's to soft cotton, gentle evenings, and the magic of making something with your hands.



Moonchild Lilac Crop-Top



An effortless project with a touch of charm. Partly crocheted in airy lace, with straightforward shaping and adjustable ties, it's lightweight, comfortable, and just right for layering and late summer wear.

Details

NON TRANSPARENT,
CROCHET PADS ADDED



BACK VIEW

BUTTONS &
STRAPS



INTERMEDIATE
SKILLS

Stitches

- chain
- single crochet
- half double crochet
- double crochet
- picot



Material



YARN

DK or light worsted cotton yarn (lilac or any other color of your choice)

1 skein: 50gr = 125m/136yds; 100% Cotton.

Amount of yarn

S-100 gr M-120 gr L-140 gr

XL-160 gr 2XL-180 gr 3XL-200 gr

HOOKS, NEEDLES & OTHER SUPPLIES

- 3 mm crochet hook
- Yarn needle for weaving in ends
- 1 stitch marker
- 5 wooden buttons

TENSION

20-21dc in 5 rows = 10 x 10cm/4 x 4in

Size Guide



PATTERN SIZES

Although this isn't a typical standard-size tutorial, there are a couple of differences for standard sizes that I have included in this pattern. Therefore, different size information is given in the format S-M-L-XL-XXL-XXXL. Stitch repeats are given in parentheses.

SIZES & MEASUREMENTS

This tutorial doesn't propose standard measurements but is rather intended to fit the top according to your own proportions. Because of that, you will be doing some measurements of your body before you start crocheting the top.

TOP UNDERBUST

12.5 cm/ 5 in

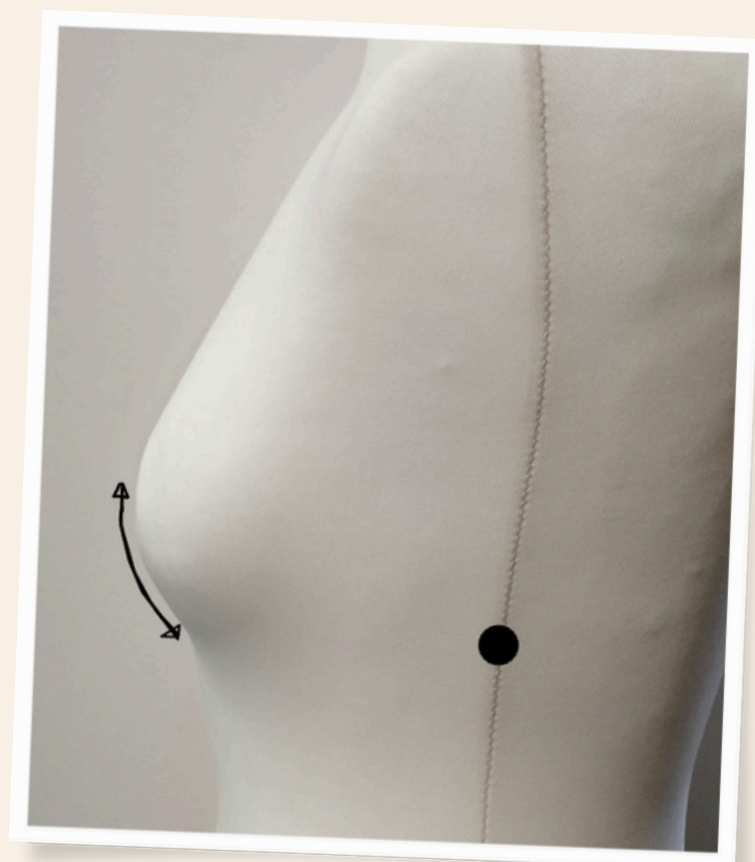
Measuring Guide

BUST POINT TO UNDERBUST

To get the right size and shape of the cups, you'll need to measure bust point to underbust.

Look at the photo on the right, and run the measuring tape as the black arrow indicates - from your bust point (the nipple) to the underbust (where your breast ends). Write down this measurement, which you will use to crochet a chain of the corresponding length.

Depending on your breast size, this number is about 8-15cm/3-6in.



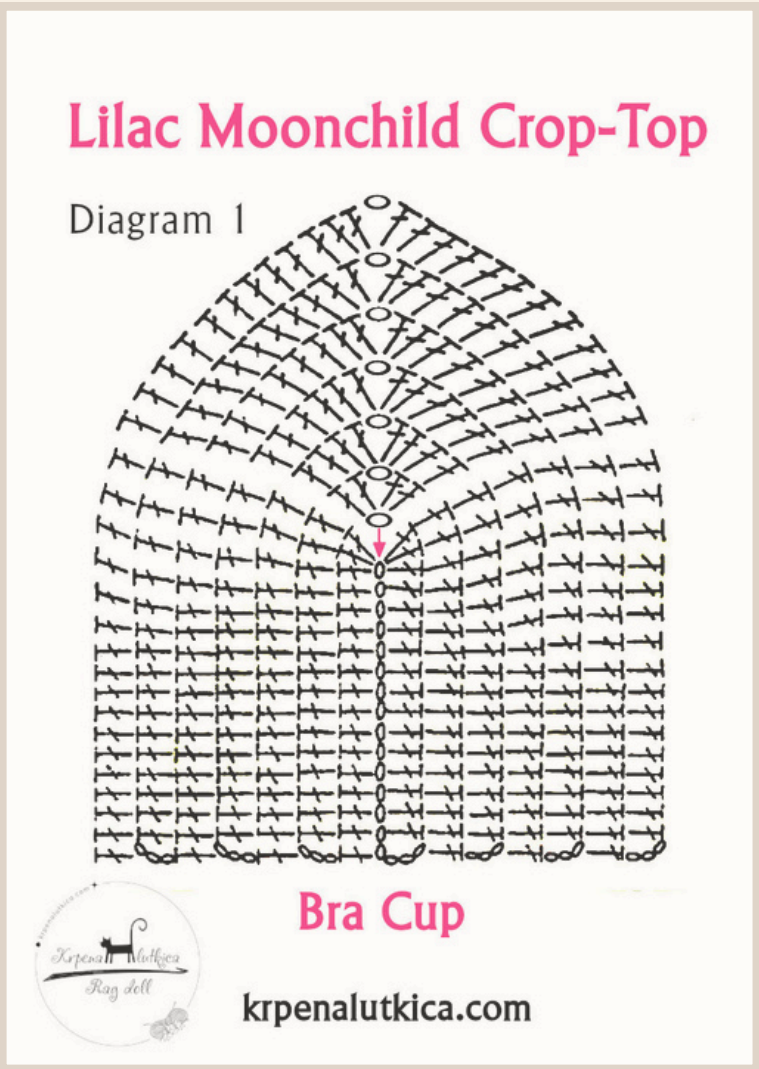
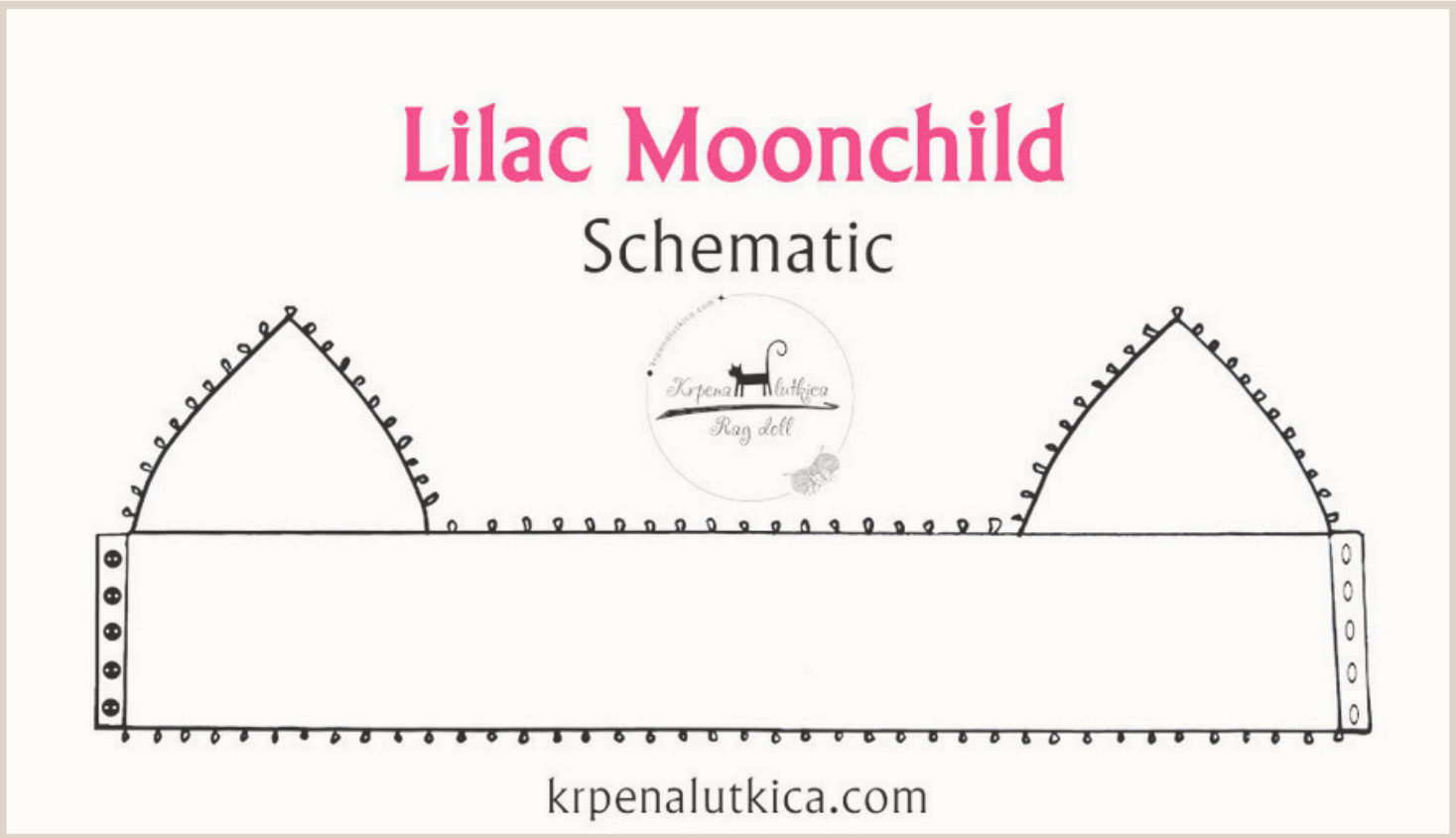
BACK WIDTH

Measure the width of your back starting at the black dot in the photo above (below the armpit, in the line of underbust), and measure the distance from the left to the right armpit, all the way across your back. Write down this measurement as well. This will be the length of the chain between the cups.



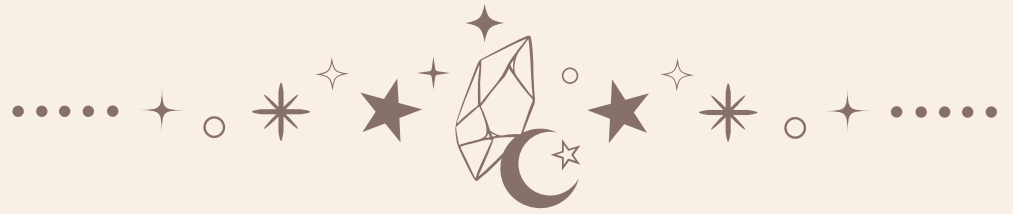
Schematic & Diagrams

Below you can see a schematic showing the Moonchild Lilac Crop-Top, and under it is Diagram 1 for making the bra cups.



- Abbreviations
- st(s) – stitch(es)
 - ch – chain
 - sl.st – slip stitch
 - sc – single crochet
 - hdc – half double crochet
 - dc – double crochet
 - picot – ch3, sc in 3rd stitch from hook
 - blo – do sts in back loops
 - pm – place marker

Instructions



Right Cup

Start by chaining as many sts as you need to get your bust point to underbust measurement, but make sure you have an odd number of sts. Work in turns, following Diagram 1 above, and written instructions below.

Row 1 – Ch2, dc in 4th st from hook, dc to the last st; in last st:(3dc, ch1, pm, 3dc). Continue working along the other side of the chain – dc to the end of row. Turn.

Row 2 – Ch2, dc in 4th st from hook, dc to the marker; in ch1-sp:(2dc, ch1, 2dc), move marker to ch1-sp. Continue with dc in each st till the end of row. Turn.

Repeat Row 2 until you have a total of 6-7-8-9-10-11 rows, or as many rows as you need to fit your boob in it.

Last row – Ch3, (sk1, dc, ch1)repeat to the marker, in ch1-sp:(dc, ch1, dc), remove marker. Continue to the end of row like this: (ch1, sk1, dc). Break yarn, weave in end.

Left Cup

Make the left cup in the same way. When you finish the left cup, DO NOT break yarn, DO NOT TURN.

Underbust

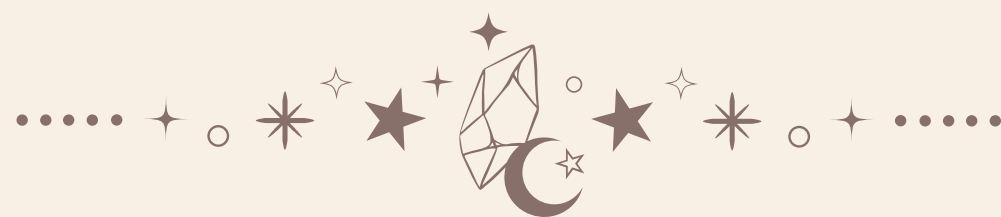
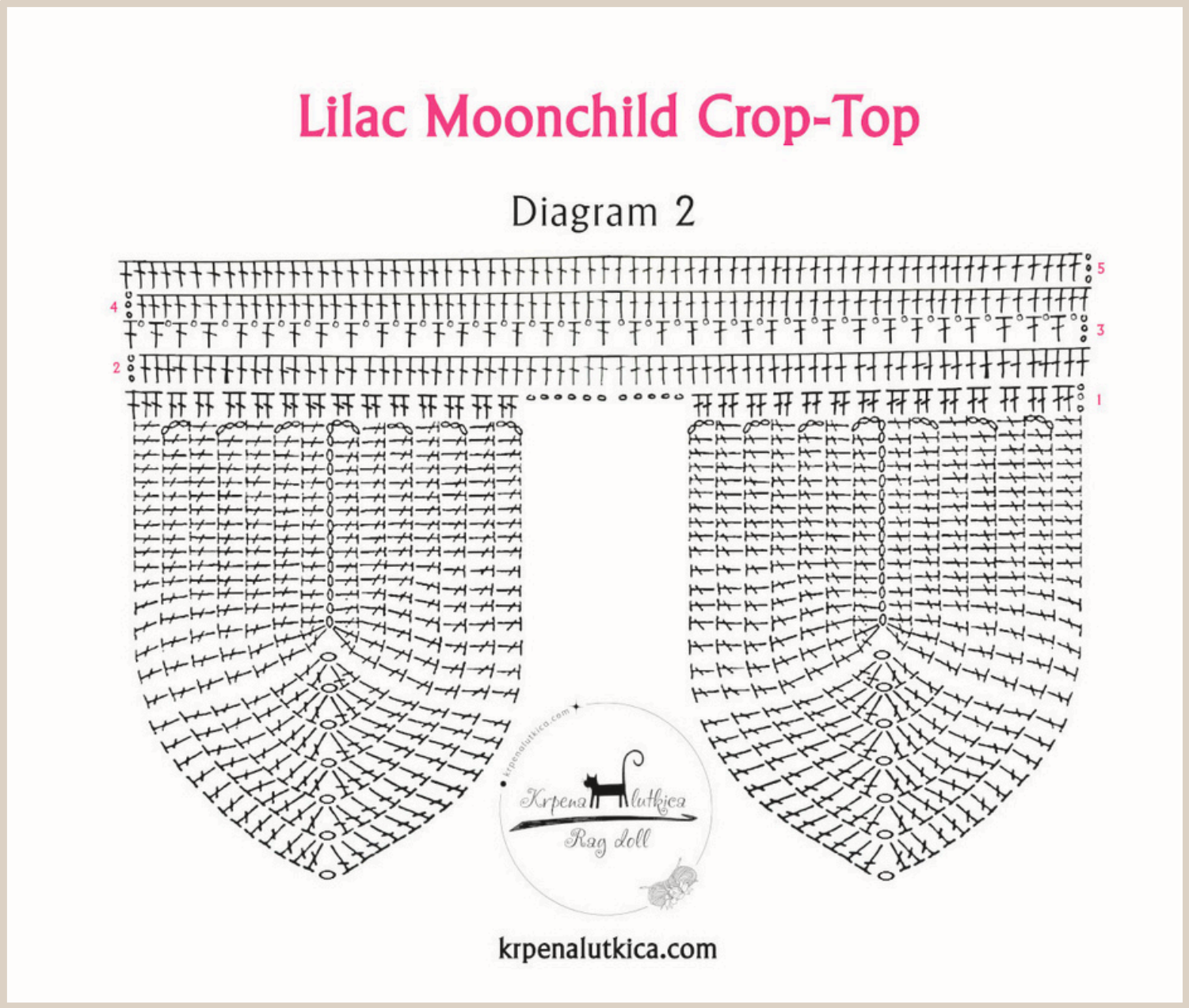


Diagram 2 below shows both cups turned upside down, and the underbust part of the top which is done along their bottom sides. The number of chain sts between the cups will depend on your own measurements, as stated above in the section **Sizes & Measurements**, as well as in further instructions.



Follow **Diagram 2** and written instructions below.

Note: since at this stage you are holding the top upside down, the left cup is on your right, and the right cup is on the left. I wrote this remark so as not to confuse left and right cups in further text.



Work along the bottom side of the left cup like this:

Row 1 – ch3, 2dc in 1st ch-sp, 2dc under each dc/ch3 of the cup. Next, chain the number of sts that corresponds to your **Back Width**, then continue along the bottom side of the right cup by doing 2dc under each dc/ch3 of the cup, finish with 1dc in the last st. Turn. Count the sts – there should be an uneven number of sts. If you have an even number of sts, add 1 dc in next row.

Row 2 – Ch3, dc in each st to the end of row. Turn.

Row 3 – Ch4, (sk1, dc, ch1)repeat to the end of row, 1dc in the last st. Turn.

Row 4 – Ch3, (1dc in ch-sp, 1dc in next st)repeat to the end of row, turn.

Row 5 – like Row 2.

Repeat rows 3-5 three more times, DO NOT break yarn, turn. Start the edging.

Edging

Sc in 1st st, picot, (3sc, picot)repeat to the end of row, finish with a picot in the last st (or wherever it may fall). DO NOT turn, continue edging all around the top. When you get almost to the end of the left cup, stop doing the picots and only work sc: counting from the bottom of the left cup, do the last picot in the 5th – 5th – 6th – 6th – 7th – 7th ch-sp.



Left Placket (for buttons)

Row 1 – (2sc in next ch-sp)repeat 5-5-6-6-7-7 times, [(2sc under ch3/dc)2x, 2sc in next ch-sp]4x, (2sc under ch3/dc)2x. Turn.

Row 2 – blo sc along the placket, i.e. until there are 3sts left before the first picot, turn.

Row 3 – blo sc along the placket, turn.

Repeat Row 3 twice more, break yarn, weave in end.

Right Placket (with button holes)

Attach yarn at the right bottom corner of the top, do a sc in the first st, and work blo sc.

Row 1 – 3blo sc, (ch3, sk2, 5blo sc)repeat 4-4-5-5-6-6 times, ch3, sk2, 3blo sc, turn.

Row 2 – 3blo sc, (2sc in next ch-sp, 5blo sc)repeat 4-4-5-5-6-6 times, 2sc in next ch-sp, 3blo sc, turn.

Row 3 – blo sc along the placket, break yarn, weave in end. Sew buttons on the left placket.





Straps

Chain 320-320-340-340-360-360 sts and do 1 row of hdc on all sts. Break yarn, weave in end.

Pull the drawstring through the top like shown in the photo below, and try on the top. Also, take a look at [this video clip](#) showing how to pull the straps through the top and tie them around your neck.





Bra Pads

To prevent transparency, some crocheters place manufactured bra pads in tops like this. I tried some pads I found in my local shops but the shape was too perky and looked unnatural. That's why I decided to crochet my own pads and line the top with them. It is certainly a good idea to reinforce the cups if you don't feel comfortable wearing the top without a bra.

Crocheted items stretch when worn, which results in cups becoming transparent. On the other hand, if you love being free and are not worried whether your boobs will attract attention (which I absolutely respect), you can omit this step.

I crocheted 2 additional cups/bra pads with slightly different shade of lilac (because I'd used up the original yarn), but it turned out perfect for this tutorial – now you are able to see what they look like and how they sit in the cups.

For the bra pads I did 2 rows less than for the cups. For example, my size M cups have 7 rows of dc, while the pads have 5 rows. In the next row I attached each pad to the inside of the cups by doing slip stitches all around. And that's all there is to it.





After inserting these additional bra pads, I noticed a couple of benefits of doing this step.

Firstly, the cups don't stretch as much as they did without the pads. The whole top has a more solid structure, while it still remains flexible, especially in the underbust area, but with no tendency to become too loose.

Secondly, the cups look fuller but natural, (and so do my breasts) as if I'm wearing an invisible bra. This characteristic is very important for me because I love the natural look. I'm not really into push-up brasiers, bikinis, etc, particularly on the beach, and in the summer, when things are supposed to be relaxed, fun, comfy...

Finally, this additional layer didn't make the top too heavy or too warm to wear, which, I must admit, did cross my mind. On the contrary. Being made from fine cotton yarn, it feels very cosy and pleasant to the skin, even at 40°C (104°F)!





Cleavage Drawstring

In case you find the cleavage too deep, you can crochet a drawstring that can be pulled through chain spaces of the cups, above the buttons, and close the cleavage as much as you want. To do that, ch100 and do hdc along the chain. Break yarn, weave in end, and use this drawstring like you would lace up a corset.



CLEAVAGE
OPEN



CLEAVAGE CLOSED
WITH DRAWSTRING



A Word From the Designer

This pattern is for personal use only. Any unauthorized copying or selling of the pattern is not allowed.

If you make and publish your version of the Lilac Moonchild Crop-Top, please state me as the creator of the pattern.

I would appreciate any form of feedback to do with the clarity of these instructions, as well as any mistakes you may come across while making this garment.

If you have any comments, questions, or need help making this piece, please write to me:
ragdoll@krpenalutkica.com

You will also find me here:

<u>Pinterest</u>	<u>Ravelry Store</u>	<u>Love Crafts Store</u>
<u>Instagram</u>	<u>Facebook page</u>	<u>You Tube channel</u>

Thank you for downloading this pattern and for your support! Remember that you can always subscribe to my [Newsletter](#) and never miss an opportunity to get new patterns.

Happy Crafting!
©Jelena Mitić, 2025.

krpenalutkica.com



MOONCHILD ITEMS

FOR PATTERN
COLLECTORS

