

Duchess Shawl

Modern, cool, oversized piece of accessory



This fairly simple to make, yet, very effective pattern will give you a sense of style as well as keep you warm and cosy in cool summer evenings...



INTRODUCTION

I was asked to make the [Duchess Shawl](#) by a friend of mine. She is a sophisticated young woman with fine taste in clothes, who needed a big, modern wrap to keep her warm in cool days. Her main goal was to wear this shawl over a denim jacket in fall and spring. After her order, I made several more of these shawls in light grey, dark gray, gold and bronze colors.

The oversized **Duchess Shawl** is crocheted in rounds. It consists of one full circle motif completed in the round, two half-circles and two triangle motifs which are crocheted in turns. Attached fringe adds to its romantic, feminine look but even if you choose to have it without fringe, it will keep its beauty in the extraordinary texture, which is the main embellishment of this shawl.

DIFFICULTY LEVEL, SKILLS, TECHNIQUES

For making this shawl you will need intermediate knowledge of crocheting in the rounds and in turns: chain, slip-stitch, double crochet.

MATERIALS

Yarn

700gr of sport cotton yarn - 1 skein: 50gr = 125m/136yds; 100% Cotton

Hooks

3.5mm crochet hook

TENSION

Worked in turns:

- 24dc = 10cm / 4in
- 10 rows of dc = 10cm / 4in

SIZE INFORMATION

Finished Measurements

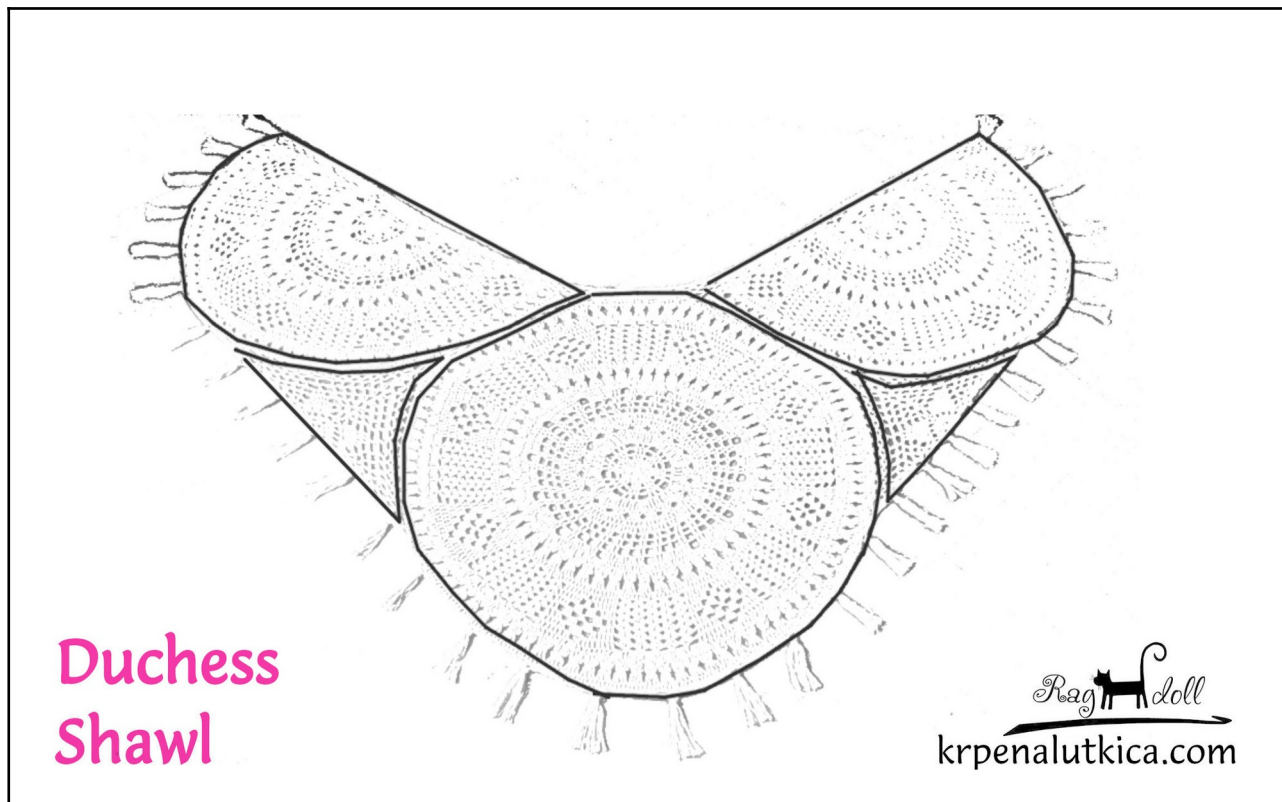
The shawl has the following dimensions:

Height (full-circle diameter) – 75-80cm / 29.5-31.5in

Length of the upper edge – 150-160cm / 59-63in

Fringe – 22cm / 8.5in

Schematic



GLOSSARY, REFERENCES, SPECIAL STITCHES

This pattern is written using standard US crochet terminology.

Stitches used for this project are: chain, slip stitch, single crochet, double crochet. Pattern repeats are given in parentheses.

ABBREVIATIONS

st(s) - stitch(es)

ch - chain

ch-sp. - chain space

sl.st. - slip stitch

dc - double crochet (yarn over once)

INSTRUCTIONS

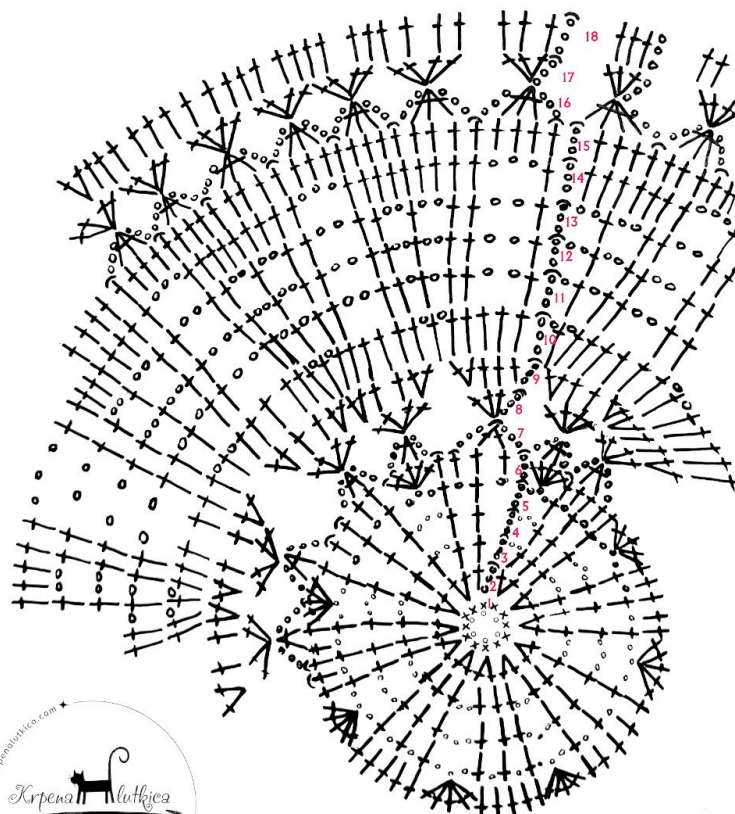
The shawl is worked in 5 stages:

Step 1 – Central full-circle motif is completed in rounds according to **Diagram 1 & Diagram 2 – Full-Circle Motif**

Steps 2 and 3 – Two half-circle motifs are completed one by one according to **Diagram 1 & Diagram 2 – Half-Circle Motif** and attached to the central circle piece as you go

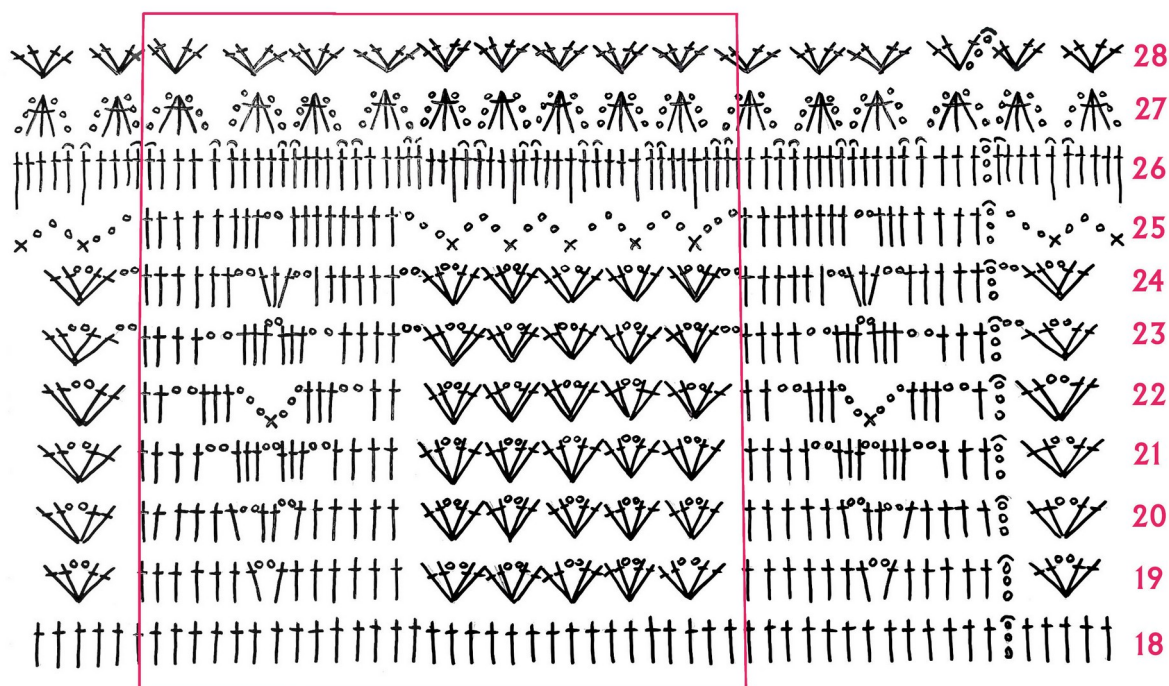
Steps 4 and 5 – Two triangle motifs are completed following **Diagram 3** and attached to the rest of the shawl as you go.

Duchess Shawl - Diagram 1



Duchess Shawl

Diagram 2 Full-Circle Motif



The pink line in **Diagram 2** is the repeating section

Central Motif – Full Circle

Start by ch6 and close the ring by doing a sl.st. in 6th loop from the hook. Work in the rounds. Follow:

Diagram 1 from rounds 1–18

Diagram 2 from rounds 19–28 (round 18 on Diagram 2 is there only for easier counting of skipped sts, DO NOT repeat this round)

Written instructions below from rounds 1–30 (Rounds 29 and 30 are not included in the diagrams, they are explained in written instructions).

Rnd 1 – 12sc in the ring, sl.st. in 1st sc (= 12 sts). DO NOT turn, work in the rounds.

Rnd 2 – ch3, 1dc in 1st st; (2dc in next st)repeat to the end; sl.st. in 3rd loop of the initial ch3. (= 24 sts)

Rnd 3 – ch3, 2dc, ch2, (3dc, ch2)repeat to the end of rnd; sl.st. in 3rd loop of the initial ch3. (= 24dc and 8 ch2-spaces)

Rnd 4 – ch3, 2dc, ch3, (3dc, ch3)repeat to the end of rnd; sl.st. in 3rd loop of the initial ch3. (= 24 dc and 8 ch3-spaces)

Rnd 5 – ch4, 1dc, ch1, 1dc, ch3, [(1dc, ch1)2x, 1dc, ch3]repeat to the end of rnd; sl.st. in 3rd loop of the initial ch3. (= 24 dc, 8 ch3-spaces, and 16 ch1-spaces)

Rnd 6 – ch3, (1dc in ch1-sp, 1dc in next st)2x, [5dc in ch3-space, (1dc in next st, 1dc in next ch1-sp)2x, 1dc in next st]repeat to the end of rnd; finish with 5dc in last ch3-sp, sl.st. in 3rd loop of the initial ch3. (= 80 sts)

Rnd 7 – (ch3, 2dc tog, ch3, sl.st. in next st, sl.st. in next st)= **cluster**; repeat making these clusters to the end of rnd; 3sl.st. along the initial ch3, sl.st. in top of the 1st cluster. (= 20 clusters)

Rnd 8 – ch3, 3dc in top of the first cluster, (4dc in top of the next cluster)repeat to the end of rnd; sl.st. in 3rd loop of the initial ch3. (= 20 groups of 4dc)

Rnd 9 – ch3, 1dc in the same st as the ch3, 2dc, 2dc in next st, (2dc in next st, 2dc, 2dc in next st)repeat to the end of rnd; sl.st. in 3rd loop of the initial ch3. (120 dc)

Rnd 10 – ch3, 5dc, ch1, 1dc between the previous and the next st, ch1, (6dc, ch1, 1dc between the previous and the next st, ch1,)repeat to the end of rnd; sl.st. in 3rd loop of the initial ch3. (280 sts = 140 dcs and 40 ch1)

Rnd 11 – ch3, 1dc, ch2, sk2, 2dc, ch1, sk.ch1, 1dc, ch1, sk.ch1, (2dc, ch2, sk2, 2dc, ch1, sk.ch1, 1dc, ch1, sk.ch1)repeat to the end of rnd; sl.st. in 3rd loop of the initial ch3. (=180 sts = 100 dc, 20 ch2-sp, 40 ch1-sp)

Rnd 12 – ch3, 1dc, ch2, sk.ch-sp, 2dc, ch2, sk.ch-sp, 1dc, ch2, sk.ch-sp, (2dc, ch2, sk.ch-sp, 2dc, ch2, sk.ch-sp, 1dc, ch2, sk.ch-sp)repeat to the end of rnd; sl.st. in 3rd loop of the initial ch3. (220 sts = 100 dc and 20 ch2-sp)

Rnd 13 – like Rnd 12

Rnd 14 – ch3, 1dc, ch3, sk.ch2, (2dc, 2dc over ch2, 1dc, 2dc over next ch2, 2dc, ch3, sk.ch2)repeat to the end of rnd; finish with 2dc, 2dc over ch2, 1dc, 2dc over next ch2; sl.st. in 3rd loop of the initial ch3. (=240 sts)

Rnd 15 – ch3, 1 dc, 3dc over ch3-sp, (9dc, 3dc over ch3-sp) repeat to the end of rnd; finish with 7dc, sl.st. in 3rd loop of the initial ch3. (=240 sts)

Rnd 16 – sl.st, (ch3, 3dc tog, ch3, sl.st. in next st)repeat to the end of rnd but do the last cluster like this: ch3, 4dc tog.

Additional notes about this round: This is a similar stitch like the one done in rnd 7 but with a difference that it's a 5-stitch cluster, not a 4-stitch cluster like in rnd 7. Also, the first ch3 of each cluster is done in the same st where we did the sl.st. This is because I aimed to achieve symmetry. I wanted every third cluster to fall exactly above the ch3-sp. Another remark here is that after this rnd is completed, the work will become wavy. Don't worry about that because the next rnd will tighten the piece just enough to have a nice, flat circle. Finish the rnd with 3sl.sts along the initial ch3, sl.st. in top of the 1st cluster. (= 60 clusters)

Rnd 17 – like Rnd 8 (240 sts = 60 groups of 4dc)

To avoid counting in **the next rnd**, place a st. marker in each 30th stitch of this rnd = 8 st. markers. If you don't use or don't have markers, just continue as usual – there are written instructions for both options – with and without using stitch markers.

Rnd 18 – If you used markers in previous rnd: ch3, (dc to the marker, 2dc in the st. with a marker)repeat to the end of rnd; sl.st. in 3rd loop of the initial ch3. (=248 sts) – If you don't use st. markers, follow these directions for Rnd 18 – ch3, 28dc, 2dc in next st, (29dc, 2dc in next st)repeat to the end of rnd; sl.st. in 3rd loop of the initial ch3. (=248 sts). From rnd 19 follow **Diagram 2**.

Rnd 19 – ch3, 6dc, ch2, 7dc, [sk2, (in next st do: 2dc, ch2, 2dc, sk2)5x, 7dc, ch2, 7dc]7x; sk2, in next st do: 2dc, ch2, 2dc, sk2, sl.st. in 3rd loop of the initial ch3.

Rnd 20 – ch3, 5dc, ch2, sk1, 2dc in ch2-sp, ch2, sk1, 6dc, [sk2, (in next ch2-sp do: 2dc, ch2, 2dc)5x, sk2, 6dc, ch2, sk1, 2dc in ch2-sp, ch2, sk1, 6dc]7x, sk2, (in next ch2-sp do: 2dc, ch2, 2dc)5x. Sl.st. in 3rd loop of the initial ch3.

Rnd 21 – ch3, 3dc, ch2, sk2, (3dc in next ch2-sp, ch2, sk2)2x, 4dc, [sk2, (in next ch2-sp do: 2dc, ch2, 2dc)5x, sk2, 4dc, ch2, sk2, (3dc in next ch2-sp, ch2, sk2)2x, 4dc]7x, sk2, (in next ch2-sp do: 2dc, ch2, 2dc)5x. Sl.st. in 3rd loop of the initial ch3.

Rnd 22 – ch3, 1 dc, ch2, sk2, 3dc in next ch2-sp, ch3, sc in next ch2-sp, ch3, 3dc in next ch2-sp, ch2, sk2, 2dc, [sk2, (in next ch2-sp do: 2dc, ch2, 2dc)5x, 2dc, ch2, sk2, 3dc in next ch2-sp, ch3, sc in next ch2-sp, ch3, 3dc in next ch2-sp, ch2, sk2, 2dc]7x, sk2, (in next ch2-sp do: 2dc, ch2, 2dc)5x. Sl.st. in 3rd loop of the initial ch3.

Rnd 23 – ch3, 1 dc, 2dc in next ch2-sp, ch2, sk3, 3dc in next ch3-sp, ch2, 3dc in next ch3-sp, ch2, skip3, 2dc in next ch2-sp, 2dc, [ch2, sk2, (in next ch2-sp do: 2dc, ch2, 2dc)5x, ch2, sk2, 2dc, 2dc in next ch2-sp, ch2, sk3, 3dc in next ch3-sp, ch2, 3dc in next ch3-sp, ch2, skip3, 2dc in next ch2-sp, 2dc]7x, ch2, sk2, (in next ch2-sp do: 2dc, ch2, 2dc)5x. Ch2, sl.st. in 3rd loop of the initial ch3.

Rnd 24 – ch3, 3dc, 2dc in next ch2-sp, ch2, sk3, 3dc in next ch2-sp, ch2, sk3, 2dc in next ch2-sp, 4dc, [ch2, sk ch2-sp, sk2, (in next ch2-sp do: 2dc, ch2, 2dc)5x, ch2, sk2, sk ch2-sp, 4dc, 2dc in next ch2-sp, ch2, sk3, 3dc in next ch2-sp, ch2, sk3, 2dc in next ch2-sp, 4dc]7x, ch2, sk ch2-sp, sk2, (in next ch2-sp do: 2dc, ch2, 2dc)5x. Ch2, sk ch2-sp, sl.st. in 3rd loop of the initial ch3.

Rnd 25 – ch3, 5dc, 2dc in next ch2-sp, ch2, sk3, 2dc in next ch2-sp, 6dc, ch3, sk ch2-sp, sk2, sc in next ch2-sp, (ch3, sk4, sc in next ch2-sp)4x, [ch3, sk2, sk ch2-sp, 6dc, 2dc in next ch2-sp, ch2, sk3, 2dc in next ch2-sp, 6dc, ch3, sk ch2-sp, sk2, sc in next ch2-sp, (ch3, sk4, sc in next ch2-sp)4x]7x, ch3, sk2, sk ch2-sp, sl.st. in 3rd loop of the initial ch3. (= 376 sts)

Rnd 26 – ch3, 7dc, 2dc in next ch2-sp, [8dc, (4dc in next ch3-sp, 1dc in next st)5x, 4dc in next ch3-sp, 8dc, 2dc in next ch2-sp]7x, 8dc, (4dc in next ch3-sp, 1dc in next st)5x, 4dc in next ch3-sp. Sl.st. in 3rd loop of the initial ch3.

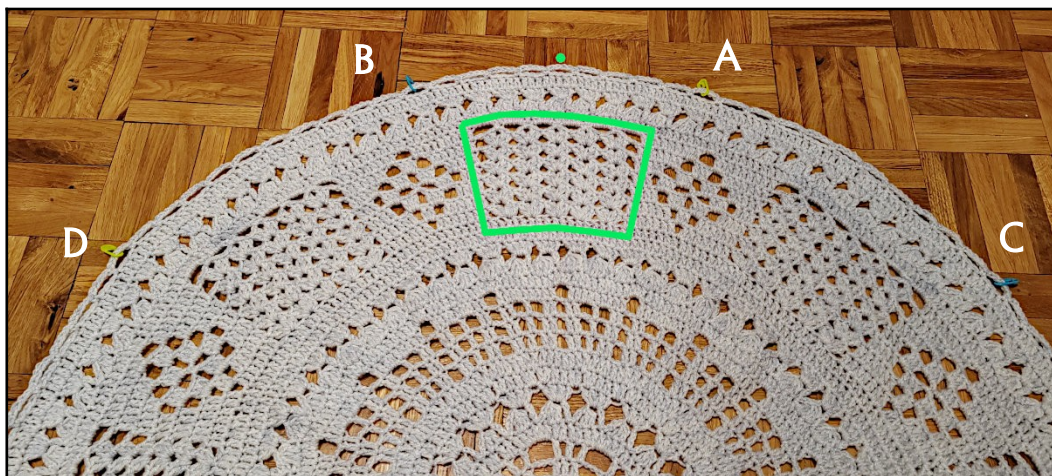
Rnd 27 – Like Rnd 7. (= 94 clusters)

Rnd 28 – Like Rnd 8. (= 94 groups of 4dc)

Rnd 29 – ch3, 1dc in each stitch to the end of rnd, sc in 3rd loop of the initial ch3.

Rnd 30 – (ch5, sk3, sc in next st)repeat to the end of rnd. Sl.st. in the 1st sc. Cut yarn, weave in end.

Lay the piece flat and with one square section in the top middle of the circle. See photo below – central square section is marked as a green trapeze. Mark the top middle ch-sp – green dot in the photo below. Place marker A (yellow marker in the photo) in the 5th ch-sp to the right from the middle ch-sp. Place marker B (blue marker) in the 5th ch-sp to the left from the middle ch-sp. Place marker C (blue marker) in the 11th ch-sp to the right of marker A. Place marker D (yellow marker) in the 11th ch-sp to the left of marker B. These will be the places of attaching half-circle motifs to the full-circle motif.



Now, leave this piece aside and start working the right half-circle motif.

Side Motif – Half-Circle

Start by ch6 and close the ring by doing a sl.st. in 6th loop from the hook. Work in the rounds from rnds 1 to 6. Follow **Diagram 1** from rnds 1–7 and instructions below.

Rnd 1 – 12sc, sl.st. in 1st sc. (= 12 sts)

Rnd 2 – ch3, 1dc in 1st st; (2dc in next st)repeat to the end; sl.st. in 3rd loop of the initial ch3. (= 24 sts)

Rnd 3 – ch3, 2dc, ch2, (3dc, ch2)repeat to the end of rnd; sl.st. in 3rd loop of the initial ch3. (= 24dc and 8 ch1-spaces)

Rnd 4 – ch3, 2dc, ch3, (3dc, ch3)repeat to the end of rnd; sl.st. in 3rd loop of the initial ch3. (= 24 dc and 8 ch3-spaces)

Rnd 5 – ch4, 1dc, ch1, 1dc, ch3, sk ch3, [(1dc, ch1)2x, 1dc, ch3, sk ch3]repeat to the end of rnd; sl.st. in 3rd loop of the initial ch3. (= 24 dc and 8 ch3-spaces)

Rnd 6 – ch3, (1dc in ch1, 1dc)2x, [5dc in ch3-space, (1dc, 1dc in ch1)2x, 1dc]repeat to the end of rnd; sl.st. in 3rd loop of the initial ch3. (= 80 sts)

The next row will not be worked till the end, i.e. you won't close a circle because from now on we start working in turns to shape a half-circle. However, **do not turn yet**.

Row 7 – ch3, (sk2, 3dc tog, ch3, sl.st. in next st, sl.st. in next st) = 1st cluster; (ch3, 2dc tog, ch3, sl.st. in next st, sl.st. in next st)= cluster; make a total of 14 clusters, including the 1st one; make the 15th cluster like this: ch3, 3dc tog; sk2, 1dc in next st. Turn. (= 15 clusters)

Now you start working **in turns**. Continue following **Diagram 1**.

Row 8 – ch3, in top of the first cluster do 4dc, (in top of the next cluster do 4dc)repeat 14x; 1dc in the top of initial ch3. Turn (= 15 groups of 4dc)

Row 9 – ch3, 5dc, (2dc in next st, 2dc, 2dc in next st)repeat 13x; 4dc, 2dc in 3rd loop of the initial ch3. (= 90 dc)

Row 10 – ch3, 1dc in 1st st, 4dc, ch1, 1dc, ch1, (6dc, ch1, 1dc, ch1,)repeat 11x; 4dc, 2dc in 3rd loop of the initial ch3. (= 90dc + 24 ch1-spaces)

Row 11 – ch3, 1dc, ch2, sk2, 2dc, ch1, sk.ch1, 1dc, ch1, sk.ch1, (2dc, ch2, sk2, 2dc, ch1, sk.ch1, 1dc, ch1, sk.ch1)repeat 11x; 2dc, ch2, sk2, 2dc.

Row 12 – ch3, 1dc, ch2, sk.ch-sp, 2dc, ch2, sk.ch-sp, 1dc, ch2, sk.ch-sp, (2dc, ch2, sk.ch-sp, 2dc, ch2, sk.ch-sp, 1dc, ch2, sk.ch-sp)repeat 11x; 2dc, ch2, sk ch-sp, 2dc.

Row 13 – like Row 12

Row 14 – ch3, 1dc, ch3, sk.ch2, (2dc, 2dc over ch2, 1dc, 2dc over next ch2, 2dc, ch3, sk.ch2)repeat 12x; finish with 2dc.

Row 15 – ch3, 1dc, 3dc over ch3-sp, (9dc, 3dc over ch3-sp) repeat 12x; finish with 2dc. (= 151 sts)

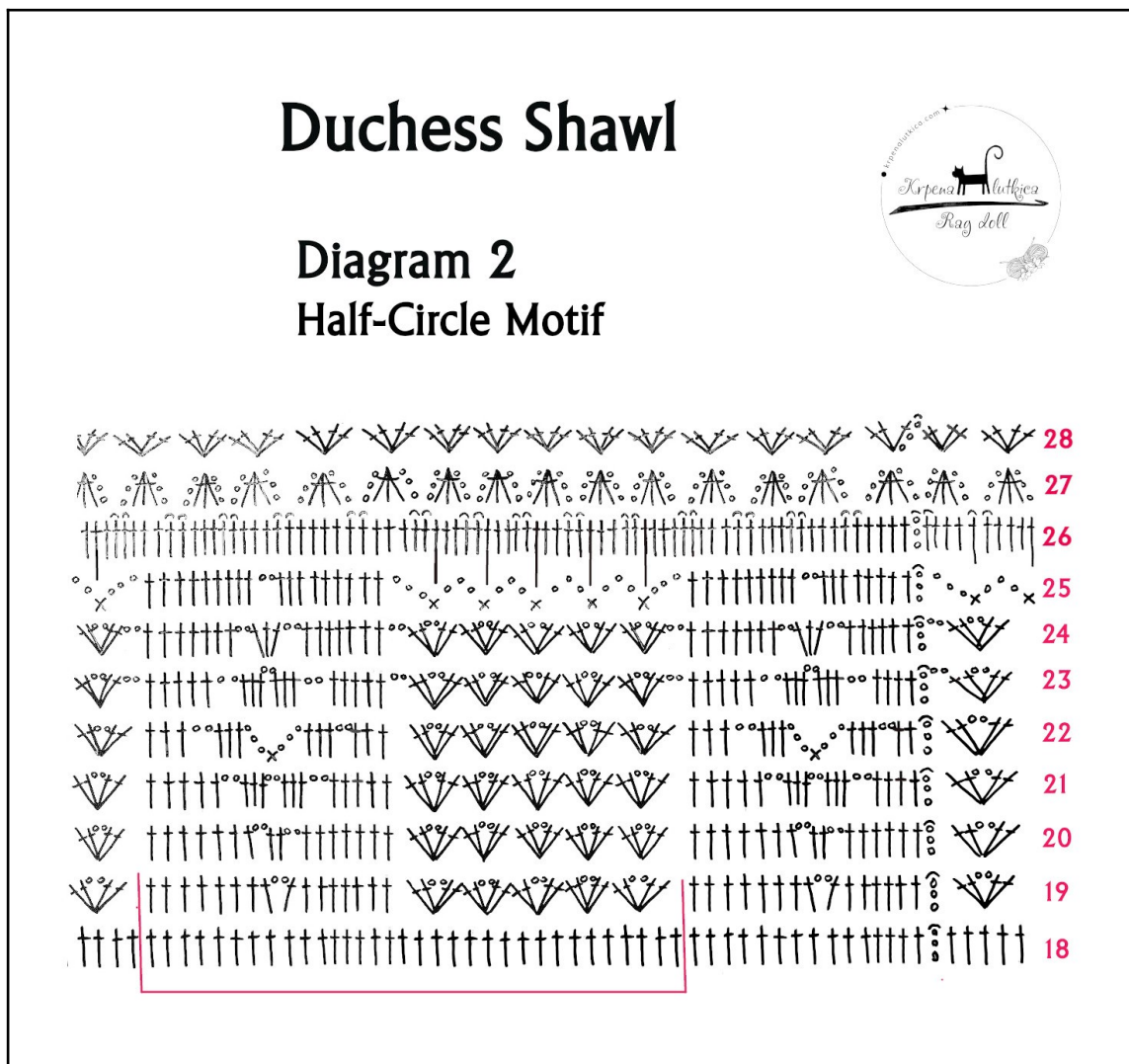
Row 16 – ch3, sk2, 4dc tog, ch3, sl.st. in next st, (ch3, 3dc tog, ch3, sl.st. in next st)repeat 34x; ch3, 4dc tog, sk2, 1 dc in last st. (= 36 clusters)

Additional notes about this round: This is a similar stitch like the one done in Row 7 but with a difference that it's a 5-stitch cluster, not a 4-stitch cluster like in Row 7. Also, the first ch3 of each cluster is done in the same st where we did the sl.st. Another remark here is that after this row is completed, the work will become a bit wavy. Don't worry about that because the next row will tighten the piece just enough to have a nice, flat half-circle.

Row 17 – work like Row 8 (146 sts = 36 groups of 4dc plus 2dc)

Row 18 – ch3, dc to the end of Row. (=146 sts)

From rnd 19 follow **Diagram 2 – Half-Circle Motif** below, and written directions in further text.



Row 19 – ch3, 7dc, ch2, 8dc, [sk2, (in next st do: 2dc, ch2, 2dc, sk2)5x, 8dc, ch2, 8dc]4x.

Row 20 – ch3, 6dc, ch2, sk1, 2dc in ch2-sp, ch2, sk1, 7dc, [sk2, (in next ch2-sp do: 2dc, ch2, 2dc)5x, sk2, 7dc, ch2, sk1, 2dc in ch2-sp, ch2, sk1, 7dc]4x.

Row 21 – ch3, 4dc, ch2, sk2, (3dc in next ch2-sp, ch2, sk2)2x, 5dc, [sk2, (in next ch2-sp do: 2dc, ch2, 2dc)5x, sk2, 5dc, ch2, sk2, (3dc in next ch2-sp, ch2, sk2)2x, 5dc]4x.

Row 22 – ch3, 2dc, ch2, sk2, 3dc in next ch2-sp, ch3, sc in next ch2-sp, ch3, 3dc in next ch2-sp, ch2, sk2, 3dc, [sk2, (in next ch2-sp do: 2dc, ch2, 2dc)5x, 3dc, ch2, sk2, 3dc in next ch2-sp, ch3, sc in next ch2-sp, ch3, 3dc in next ch2-sp, ch2, sk2, 3dc]4x.

Row 23 – ch3, 2dc, 2dc in next ch2-sp, ch2, sk3, 3dc in next ch3-sp, ch2, 3dc in next ch3-sp, ch2, skip3, 2dc in next ch2-sp, 3dc, [ch2, sk2, (in next ch2-sp do: 2dc, ch2, 2dc)5x, ch2, sk2, 3dc, 2dc in next ch2-sp, ch2, sk3, 3dc in next ch3-sp, ch2, 3dc in next ch3-sp, ch2, skip3, 2dc in next ch2-sp, 3dc]4x.

Row 24 – ch3, 4dc, 2dc in next ch2-sp, ch2, sk3, 3dc in next ch2-sp, ch2, sk3, 2dc in next ch2-sp, 5dc, [ch2, sk ch2-sp, sk2, (in next ch2-sp do: 2dc, ch2, 2dc)5x, ch2, sk2, sk ch2-sp, 5dc, 2dc in next ch2-sp, ch2, sk3, 3dc in next ch2-sp, ch2, sk3, 2dc in next ch2-sp, 5dc]4x.

Row 25 – ch3, 6dc, 2dc in next ch2-sp, ch2, sk3, 2dc in next ch2-sp, 7dc, [ch3, sk ch2-sp, sk2, sc in next ch2-sp, (ch3, sk4, sc in next ch2-sp)4x, ch3, sk2, sk ch2-sp, 7dc, 2dc in next ch2-sp, ch2, sk3, 2dc in next ch2-sp, 7dc]4x.

Row 26 – ch3, 8dc, 2dc in next ch2-sp, 9dc, [(4dc in next ch3-sp, 1dc in next st)5x, 4dc in next ch3-sp, 9dc, 2dc in next ch2-sp, 9dc]4x. (= 216 dc)

Row 27 – (ch3, 2dc tog, ch3, sl.st. in next st, sl.st. in next st) = cluster; make a total of 53 clusters; make the 54th cluster like this: ch3, 3dc tog. Turn. (= 54 clusters)

Row 28 – ch3, in top of the first cluster do 3dc, (in top of the next cluster do 4dc)repeat 54x; Turn (= 54 groups of 4dc)

Row 29 – ch3, 1dc in each stitch to the end of Row. (= 216dc)

Row 30 – At the beginning of this row, you will be joining this motif to the central motif in the length of 12 ch-spaces. Begin the row like this:

Sc in 1st stitch, ch2, insert the hook under the ch-sp of the full-circle motif marked with marker A (yarn must be behind the work, full-circle motif must be facing the wrong side), then do a sl.st, ch2, skip 3, sc in the next stitch, *ch2, insert the hook under the next ch-sp of the central motif (yarn is behind work), sl.st, ch2, skip 3, sc in the next st*. Repeat from * to * 10 more times, i.e. to marker C.

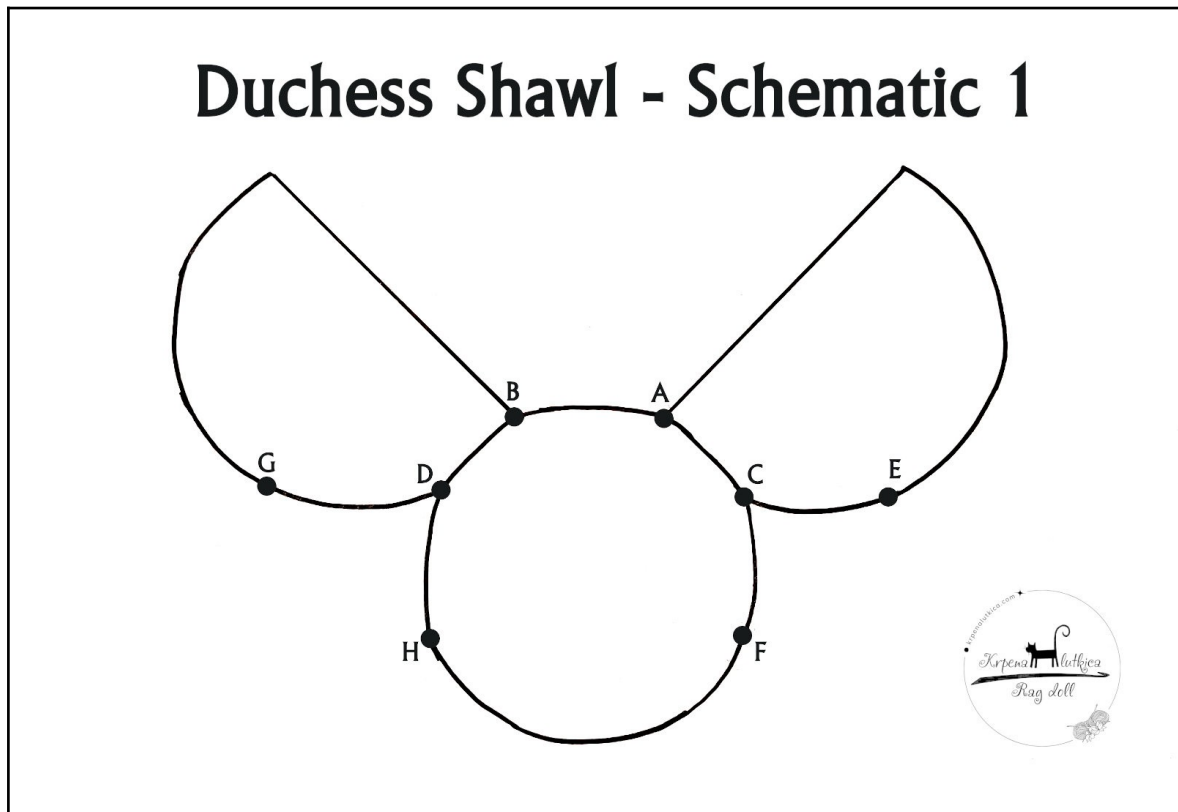
Continue working like this: (ch5, skip 3, sc in next stitch)repeat to the end of the row. Break yarn. DO NOT remove markers.

Make another half circle motif in the same way but the joining and starting of row 30 is done like this: sc in 1st st, (ch5, sk3, sc in next st)repeat until you reach marker D; ch2, insert the hook under the ch-sp of the full-circle motif marked with marker D (yarn must be behind the work, full-circle motif must be facing the wrong side) and do a sl.st, ch2, skip 3, sc in the next stitch, *ch2, insert the hook under the next ch-sp of the central motif (yarn is behind work), slip stitch, ch2, skip 3, single crochet in the next stitch*. Repeat from * to * to marker B. Break yarn, weave in end. DO NOT remove markers.

The photo below shows what the join looks like.



Next, additionally, mark both half-circle motifs and the full-circle motif for later, where you will be inserting the triangle motifs. Study **Schematic 1** below – A, B, C and D are joining spots of the full-circle with the half-circles. Place **new marker E** in the **17th** ch-sp from marker C, and another **new marker F** also in the **17th** ch-sp from marker C. Do the same with **new markers G** and **H** – both **17** ch-spaces away from marker D. Leave the piece aside and start working triangle motifs.



Left Triangle Motif

For triangle motifs follow **Diagram 3** from rnds 1–9. Rnds 10–13 are done like rnd 9, while rnd 14 (the joining round) is described in the written instructions below.

Start by ch5 and close the ring with a sl.st. in the 5th st from the hook.

Row 1 – ch4, dc, (ch1, 1dc)7x. Turn. **Work all rows with turns.**

Row 2 – ch3, (dc in ch-sp, dc in next st)8x.

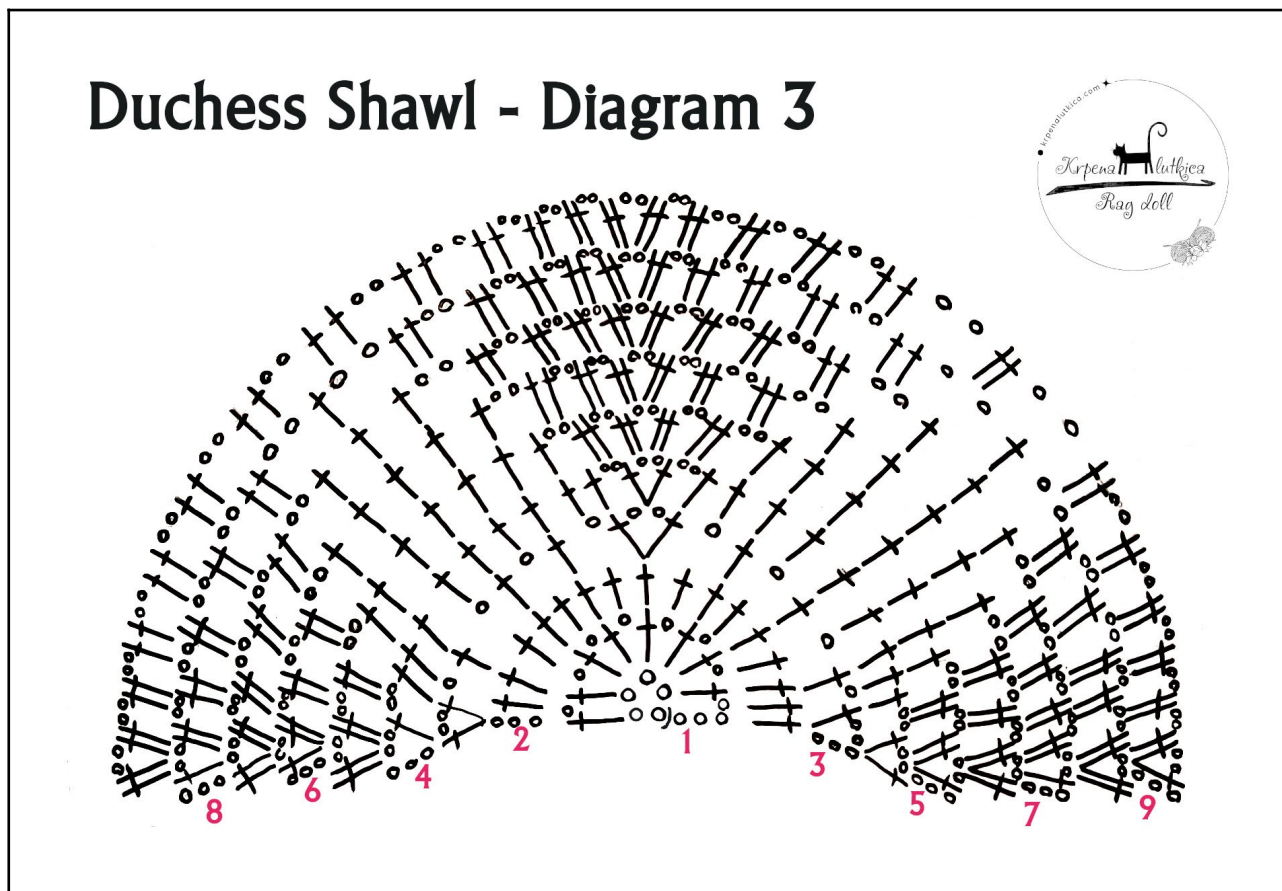
Row 3 – ch5, dc in 1st st, [(ch1, sk1, dc in next st)4x, ch2, dc in the same st. as the previous dc]2x.

Row 4 – ch5, dc in 1st st, ch2, sk ch2, dc, (dc in ch-sp, dc in next st)4x, in next ch-sp(ch2, dc, ch2, dc), ch2, dc in next dc, (dc in ch-sp, dc in next st)4x, ch2, sk ch2, dc in 3rd loop of ch3, ch2, dc in the same st.

Row 5 – ch3, dc in ch2-sp, ch2, 2dc in the same ch2-sp, [ch2, 2dc in next ch2-sp, ch2, sk1, 7dc, ch2, sk1, 2dc in next ch2-sp, ch2], in next ch-sp(2dc, ch2, 2dc)=corner, repeat from [to] 1 more time, do the corner in the last ch2-sp.

Row 6 – ch3, dc in ch2-sp, ch2, 2dc in the same ch2-sp, [(ch2, 2dc in next ch2-sp)2x, ch2, sk1, 5dc, ch2, sk1, (2dc in next ch-sp, ch2)2x, corner in next ch-sp], repeat from [to] one more time.

Duchess Shawl - Diagram 3



Row 7 – ch3, dc in ch2-sp, ch2, 2dc in the same ch2-sp, [(ch2, 2dc in the next ch-sp)3x, ch2, sk1, 3dc, ch2, sk1, (2dc in next ch-sp, ch2)3x, corner in next ch-sp], repeat from [to] one more time.

Row 8 – ch3, dc in ch-sp, ch2, 2dc in the same ch-sp, [(ch2, 2dc in next ch2-sp)4x, ch2, sk1, 1dc, ch2, sk1, (2dc in next ch2-sp, ch2)4x, corner in next ch-sp], repeat from [to] one more time.

Row 9 – ch3, dc in ch2-sp, ch2, 2dc in the same ch2-sp, [(ch2, 2dc in next ch-sp) repeat to the corner, ch2, corner], repeat from [to] one more time.

Rows 10 to 13 – like Row 9.

Row 14 - At the beginning of this row, you will start joining this motif to the central full-circle motif and one of the side motifs (i.e. you'll insert it between them). See **Schematic 2**. Begin the row like this:

Sc in 1st ch-sp, ch2, insert the hook under the ch-sp of the full-circle motif marked with marker H (yarn must be behind the work, full-circle motif must be facing the wrong side) and do a sl.st, ch2, skip 2, sc in the next ch-sp, *ch2, insert the hook under the next ch-sp of the central motif (yarn is behind work), slip stitch, ch2, skip 2, single crochet in the next ch-sp of the triangle motif*. Repeat from * to * to corner D. In the corner (ch2, insert the hook in the st where the central motif meets the side motif, sl.st, ch2, sc in the same ch-sp of the triangle motif), *ch2, insert the hook

under the next ch-sp of the side motif (yarn is behind work), slip stitch, ch2, skip 2, single crochet in the next ch-sp*. Repeat from * to * to the end of the triangle motif. Break yarn.

Duchess Shawl - Schematic 2

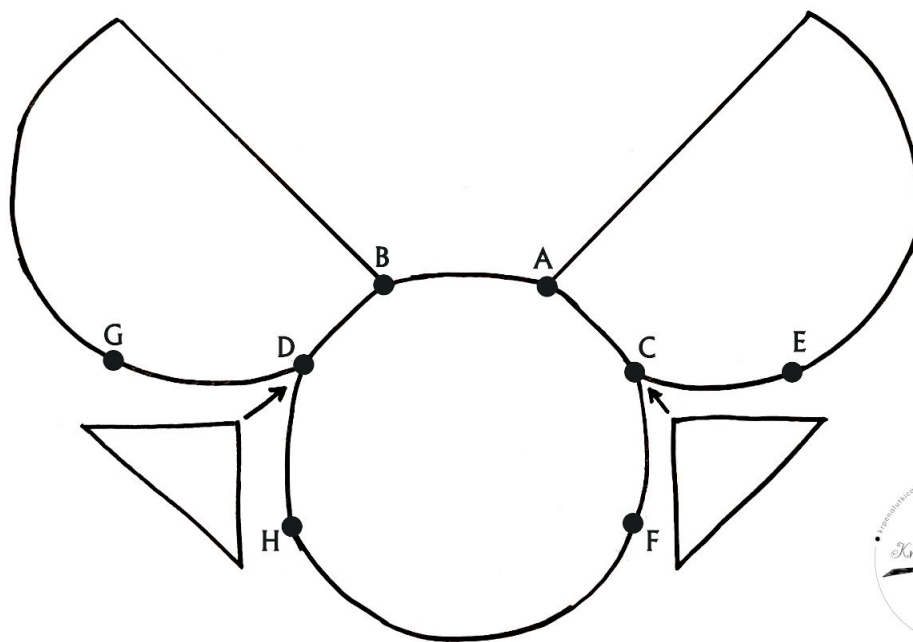


Photo showing the left triangle motif before joining



Photo below showing the joined left triangle motif



In this photo the finished triangle has 17 rows, instead of 14. However, I later unraveled 3 rows as this seemed to pull the rest of the shawl, so I advise doing 14 rows as stated in the instructions above.

Right Triangle Motif

Make the other triangle motif in the same way and join it like the left motif, but start joining it at marker E, and finish in the ch-sp where marker F is. See **Schematic 2**. Break yarn, weave in yarn end.

Edging

Attach yarn at the corner of one half-circle motif, and along both sides of front (half-circle) panels work like this: ch 1, sc in 1st st, [ch5, sk2 rows (that would be ch3 and dc, alternately), sc in next st]repeat to the next corner of the other half-circle motif. From that corner do: (ch5, sk3, sc)repeat all around the rest of the edges. When you get to the end of this row, finish with a sl.st in 1st sc. Break yarn, leave approximately a 25cm/10in long tail, which will be the same length as the fringe. This tail will be a part of your fringe.

Fringe

Cut 132 pieces of yarn 50cm/10in long. In groups of 4, fold them in half and attach to each 4th ch-sp of the shawl along its curved sides. Don't forget to attach fringe in the corner ch-sps as well.

FINISHING

Comb the fringe. On medium iron temperature, steam press the shawl and the fringe over a clean cotton cloth. Trim the fringe with sharp scissors. Leave the shawl to cool down and dry. Wear it proudly and show it off to everyone who loves crochet fashion.

GALLERY





NOTE FROM THE DESIGNER

This pattern is for personal use only. Any unauthorized copying or selling is not allowed.

If you publish your version of [Duchess Shawl](#), please state me as the creator of this pattern.

I would appreciate any form of feedback to do with the clarity of these instructions, as well as any mistakes you may come across while making the shawl.

If you have any comments, questions, or need help with crocheting this garment, please write to me to: ragdoll@krpenalutkica.com



You will also find me here:

[Ravelry Pattern Store](#)

[Instagram](#)

[Love Crafts Store](#)

[Pinterest](#)

[Facebook page](#)

[You Tube channel](#)

Thank you for downloading this pattern and for your support!

You can subscribe to Rag Doll's [Newsletter](#) and never miss an upcoming pattern?

Happy Crocheting!

©Jelena Mitić, 2025.

krpenalutkica.com